



NEWSLETTER (December 2008)

We would like to wish all of our clients and associates warm season's greetings and a happy, healthy 2009.

Fully Accredited Landscape Architectural Services

As of 2007, we have three fully registered Landscape Architects on staff. Congratulations to :

- Todd Fell
- Kristina Shaw-Lukavsky
- Julia Murnaghan

New Employees

This year we were pleased to welcome:

- Vladmir Kricsfalusy, Ecologist
- Mary Anne Young, Landscape Design Technician
- Zack Harris., Ecological Technician
- Ashley Campbell, Administrative Assistant

An Ongoing Commitment to Education

After more than 15 years as an Adjunct Professor at the University of Toronto, this fall Jim Dougan started teaching in the Masters of Landscape Architecture program at the University of Guelph.

PROJECT SHOWCASE

2008 has been another busy year at D&A. Thank you to all our associates who help us to continue to integrate and apply progressive and innovative approaches to terrestrial ecology and ecological landscape design. Selected examples of these projects are provided here.

Evergreen at the Brickworks Detailed Design

(Toronto)



In 2007 D&A was retained to provide restoration ecology support to the Design Team for this project. Key deliverables have included: a Terrestrial Natural Heritage Assessment, an Impact Assessment and recommendations for proposed on-site ecological enhancement including native plant species selections. Groundbreaking for this project occurred on Dec. 8, 2008.



Migratory Birds in the City of Toronto: A Literature Review & Data Assessment

(Toronto)

In 2008 D&A completed a literature review on migratory bird habitat use in urban and urbanizing settings, and a preliminary identification of known critical habitat for migratory birds in Toronto based on an analysis of existing data. This was part of a larger project with North-South Environmental Inc. that included assessing candidate ESAs and ANSIs in the City of Toronto.

Western Waterfront Revitalization

(Toronto)



D&A is part of a multidisciplinary team to provide natural heritage and urban forestry expertise for this Master Plan. Key deliverables to date have included an assessment of natural heritage, assisting in the preparation of alternative concepts and evaluation of plans based on ecological criteria. D&A will also be conducting an Education Seminar on Ecological Restoration.



Grangehill Residential Developments

(Guelph)

D&A has been involved in this multi-phase residential project since 1998. The firm's ecologists provided the initial environmental impact assessment and implementation reports, and facilitated public information sessions. Subsequently, The D&A's design staff were retained to provide detailed landscape designs. Site supervision is ongoing and construction is anticipated to be completed in Spring 2009.

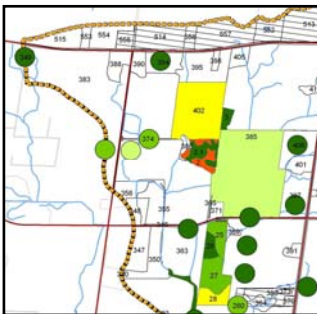
NEWSLETTER (December 2008)

Sixteen Mile Creek Subwatershed Update Study



(Milton) Over 2008 D&A has collaborated with a large multi-disciplinary study team to collect and analyze terrestrial subwatershed resources and develop an Environmental Management Strategy and Natural Heritage System (NHS) to guide future development. The recommended NHS includes designation of core areas, buffers and local corridors that interface with regional scale corridors along the Niagara Escarpment and beyond. Recommendations are both progressive and practical.

North West Brampton Subwatershed Planning, Mt Pleasant Secondary Plan & Landscape Scale Analyses



D&A, as part of a multidisciplinary team, has conducted a detailed ecological analyses and recommended a NHS within a highly urbanized environment. The process has included setting targets for urban forest canopy cover and conducting a Landscape Scale Analysis to identify high priority natural heritage areas.

County of Essex Renewable Energy Policy



D&A was retained in the spring of 2007 to provide natural heritage input to wind turbine policy development, specifically with respect to birds and bats. Key deliverables to date include a comprehensive literature review on the impacts of wind turbines on birds and bats, updated natural heritage mapping and a recommended approach. Following an expert's workshop led by D&A, the County solicited further public input and in 2008 moved forward with wind turbine policies.

Red Hill Valley Project Monitoring

(Hamilton)

The Grand Opening of the Red Hill Expressway occurred on November 3, 2007. Innovative habitat restoration is now underway, led by **Kayanase**, an ecological restoration contractor. Approximately 100 ha of valley lands are being restored over a five year intensive project.

D&A is involved in vegetation & wildlife monitoring for the project, using annual sampling to determine if native plant species are becoming established. We are also using long term plots to monitor plant community cover and wildlife utilization to judge how the valley ecosystem adapts to the relocated Creek and the Parkway



Project Update Upper Escarpment Stairs

(Hamilton)

Erosion control and revegetation plan implemented in the fall of 2007



Exciting Ongoing & Upcoming Projects:

- Lawrence Heights Urban Revitalization
- Lakeside Park Development (Mississauga)
- CVC/TRCA LID Planting Guidelines
- CVC Wetland Restoration Strategy
- City of Guelph Natural Stormwater Management Master Plan
- Region of Peel Significant Woodlands & Significant Wildlife Habitat Study

Don't forget our new location!